

LIANHUA PRIMARY SCHOOL
BRIEFING FOR P5 & P6 PARENTS
PSLE, SEC 1 POSTING,
DIRECT SCHOOL ADMISSIONS (DSA)
22 APRIL 2022

RECAP

- How PSLE Scoring Works
- How S1 Posting Works



THE PSLE REMAINS AS A USEFUL CHECKPOINT

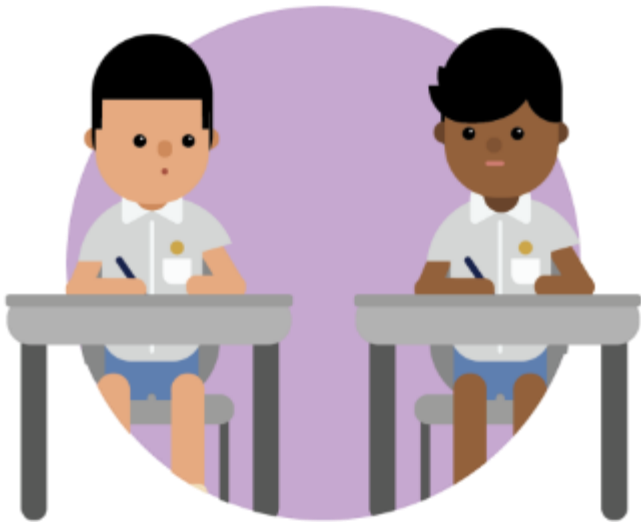
- The PSLE is a useful checkpoint at the end of primary school to help students, parents and teachers determine where each child's academic strengths lie.
- It guides students to a suitable academic programme and subject levels in secondary school – one that best suits their learning needs. In this way, students can learn and progress at a comfortable pace.
- The PSLE result also serves as a fair and transparent mechanism to determine secondary school posting.

*The PSLE is not the destination.
It is part of our children's education journey.*



THE PSLE CHANGES ARE PART OF A BIGGER STORY

Over the years, we have been fine-tuning the education system to help our students discover and develop their strengths and interests, while moving away from an over-emphasis on academic results. Our PSLE Scoring changes aim to reduce an **over-emphasis on academic results** by:



Reducing fine differentiation of students' examination results at a young age



Recognising a student's level of achievement, regardless of how his/her peers have done



Offering students and parents a wider range of secondary schools to explore

How PSLE Scoring works

(a) Reduces fine differentiation of students' examination results

- Students with similar scores in each subject will be grouped into wide scoring bands measured in 8 Achievement Levels (ALs).

(b) Reflects a student's individual level of achievement

- Unlike under the T-score system, students' ALs for each subject will reflect their level of achievement, rather than how they have performed relative to their peers.

AL	RAW MARK RANGE
1	≥ 90
2	85 – 89
3	80 – 84
4	75 – 79
5	65 – 74
6	45 – 64
7	20 – 44
8	< 20

FOUNDATION LEVEL SUBJECT GRADES WILL ALSO BE LESS FINELY DIFFERENTIATED

- Foundation subject grades will also be graded in scoring bands from **AL A to C**.
- For the purpose of S1 Posting, AL A to AL C for Foundation level subjects will be **mapped to AL 6 to AL 8 of Standard level subjects respectively**, to derive a student's overall PSLE Score.
- Similar to the PSLE T-score system, this mapping is based on the learning and assessment load of the subjects, and informs students of their readiness to access the curriculum at the secondary level.

FOUNDATION LEVEL AL	FOUNDATION RAW MARK RANGE	EQUIVALENT STANDARD LEVEL AL
A	75 – 100	6
B	30 – 74	7
C	< 30	8

4 SUBJECT ALs WILL BE ADDED TO FORM THE OVERALL PSLE SCORE

- The PSLE Score replaces the T-score Aggregate.
- The PSLE Score can range from 4 – 32, with 4 being the best.
- Students will be placed in secondary school courses based on their PSLE Score – Express, Normal (Academic) or Normal (Technical).



ENGLISH LANGUAGE AL 3

MOTHER TONGUE LANGUAGE AL 2

MATHEMATICS AL 1

SCIENCE AL 2

PSLE SCORE: 8

PLACEMENT OUTCOME	PSLE SCORE
EXPRESS	4 – 20
EXPRESS / N(A) OPTION	21 – 22
N(A)	23 – 24
N(A) / N(T) OPTION	25
N(T)	26 – 30, with AL 7 or better in both EL and MA

**No requirement of scoring AL 7 or better in EL and/or MA*

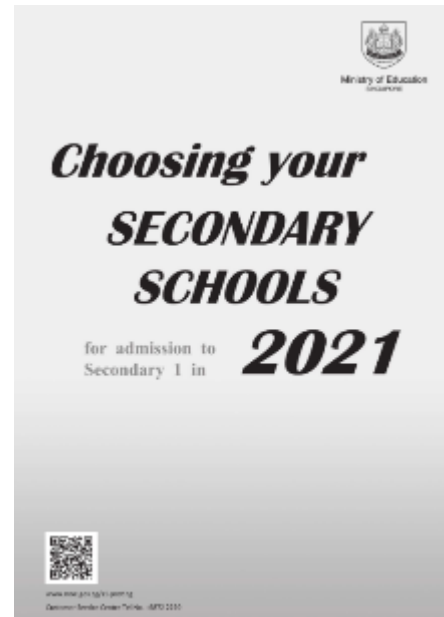
As announced in COS 2019, the Express, N(A) and N(T) courses will be phased out by 2024.

CHOICE ORDER OF SCHOOLS WILL MATTER MORE

- Students continue to have **six choices** in selecting their secondary schools.
- Students will be posted to a secondary school based on academic merit, i.e. PSLE Score, and their school choice rank order.
- If two students with the same PSLE Score vie for the last remaining place in a school, the following tie-breakers will be used in the following order:
 1. CITIZENSHIP
 2. CHOICE ORDER OF SCHOOLS **NEW!**
 3. COMPUTERISED BALLOTING
- The new tie-breaker based on school choice order recognises the different considerations that families have in making school choices.



PREPARING FOR S1 POSTING EXERCISE



- Release of PSLE results
- Submission of Secondary 1 Option Form
- Release of School Posting results





联华小学

Direct School Admission for Secondary Schools (DSA-Sec)



Ministry of Education
SINGAPORE

Entering a secondary school



PSLE/S1 Posting Process

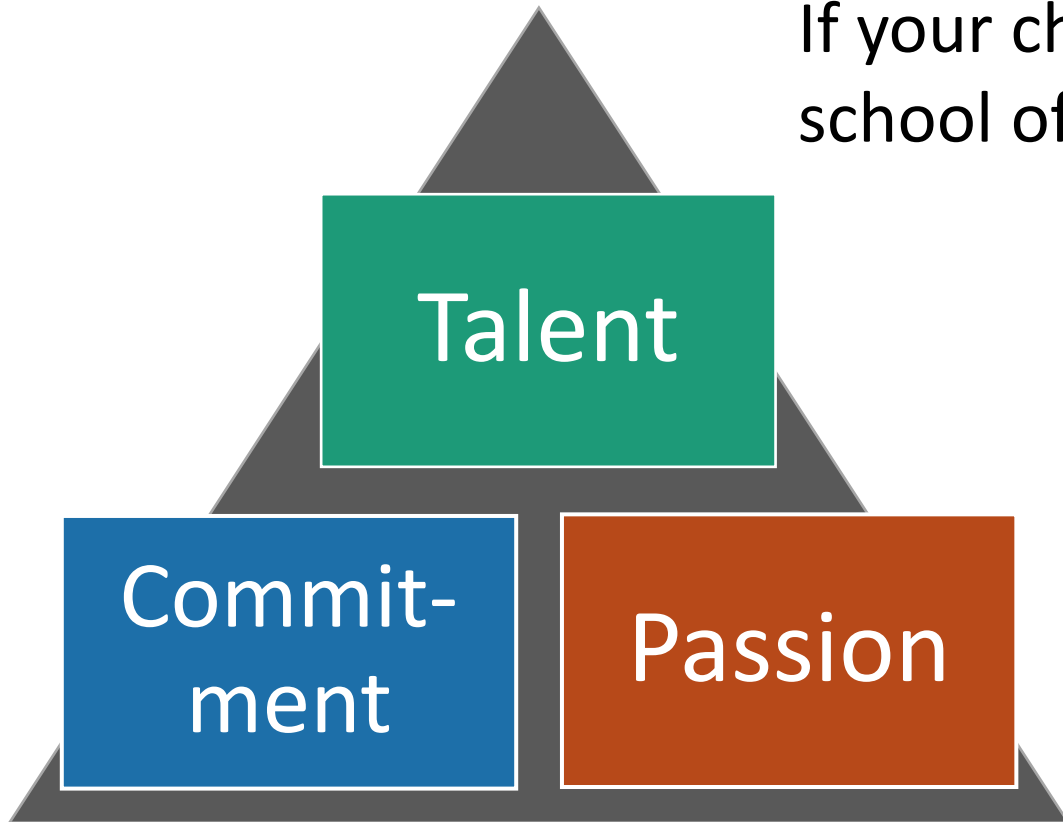
- Based on a student's **PSLE score**
- **Most students enter secondary schools this way**



DSA-Sec

- Based on a diverse range of **talents and achievements in specific academic subjects or non-academic areas, beyond what the PSLE recognises**
- Allows students to **access school programmes to develop their talents**

Is the DSA-Sec right for my child?



If your child has specific **talents** which a school offers the DSA-Sec in

And is **passionate** about and **committed** to developing his/her strengths and interests

DSA-Sec can support his/her development in that talent area.

Which school should my child apply to?

- Look for a school with **programmes that match your child's strengths and interests**
 - Schools are looking out for students whose interests and talents they can develop further.
 - Learn more about the secondary school's **pace of learning** and overall range of programmes.
- **Get the latest information** about what each school offers by:
 - Visiting schools' websites
 - Attending schools' e-Open Houses to have a virtual experience of their environments and cultures
 - Visiting the MOE's DSA-Sec website www.moe.gov.sg/dsa-sec

Useful Online Resource- SchoolFinder

How-to-Guide (SchoolFinder)



<https://go.gov.sg/schfinder-how-to-guide>

What is the timeline for 2022 DSA-Sec?

Apply through **DSA-Sec Application Portal**.

- Use 1 parent's Singpass;
- Up to 3 choices (max 2 a sch)

If you receive offers from multiple schools, rank them & complete School Preference Submission (SPS).

- Both parents login to DSA-Portal using Singpass
- Submit up to 3 school preferences.

28 Jun – 13 Sep

Late-November

5 May - 1 Jun (3 pm)

31 Oct – 4 Nov (3 pm)

Shortlisting and selection by secondary schools, conducted via e-mode. Each secondary school has different selection criteria for its categories and programmes. Schools will inform you of the selection outcome **by 13 Sep** – Confirmed Offer (CO), Waitlist (WL), Unsuccessful.

You will know whether you have been allocated to a school through the DSA-Sec at the same time you receive your PSLE results.

DSA-Sec Application Portal

- Students apply for DSA through a centralised **DSA-Sec Application Portal**, using a common application form.
- The portal has simplified and streamlined the DSA application process, making it convenient for all students.

Features of the DSA-Sec Portal

1. Centralised online applications

- Applications will be centralised across all participating secondary schools
- The form will be **easy to fill** – you only have to key in contact details and your school and talent choices

Optional: The portal will also allow you to indicate any non-school-based achievements and activities related to the talent areas you applied for.

- You **do not need to submit testimonials or hardcopy documents** to the secondary school during application.

2. Application using Singpass

- Parents can access the Portal via their SingPass login. Only one parent's SingPass login is required.
- Parents who are unable to access their SingPass can approach the primary school for assistance.

Features of the DSA-Sec Portal

3. Making choices in the DSA-Sec portal

- Through the portal, you can easily identify schools that offer programmes for your child's talent area.
- **You can indicate up to three choices.** For each choice, you will need to choose a secondary school and a talent area from that school.
- The order of the choices does not matter during application.
- **Of the three choices, up to two choices may be used to apply to the same school, for two different talent areas of that school.** This is to cater to your child's multiple interests, and allow your child to choose different schools which can develop his/her strengths and interests.
- You and your child are encouraged to **consider your choices carefully**, and manage the time and effort participating in multiple trials and interviews.

Features of the DSA-Sec Portal

Note: Students interested to apply to the **School of the Arts** and **Singapore Sports School** must do it separately at their respective websites, on top of the DSA-Sec choices made through the DSA-Sec Portal.

Examples of Possible Choice Combinations

EXAMPLE 1	Talent(s)	School(s)	Your child can apply to <u>up to three different schools</u> , with no restrictions on the talent areas.
	Choir	School A	
	Choir	School B	
	Choir	School C	
EXAMPLE 2	Talent(s)	School(s)	If your child chooses two areas in one school, he/ she can apply to two different schools only
	Choir	School A	
	String Orchestra	School A	
	Choir	School B	
EXAMPLE 3 (Not allowed)	Talent(s)	School(s)	Your child cannot use all three choices on one school. He/ She can leave the third choice blank or choose another school.
	Choir	School A	
	String Orchestra	School A	
	Mathematics	School A	

What are schools looking for?

- The selection process differs across schools, and across different DSA-Sec categories.
- Generally, schools are looking for candidates with:

Talent, passion, commitment

- Schools may look at **achievements** and **participation** (e.g., in Junior Sports Academy).

Strong personal qualities

- Schools may look at CCA records and VIA participation.
- Schools may also conduct e-interviews.

Good academic fit

- Schools may look at primary school results to ensure students can benefit from the school's pace of learning.

*Students, be sincere, be genuine, and **be yourself** – if you are a good fit for the school, it **will** show.*

Mode of Selection

- Due to the COVID-19 situation, the selection interviews, auditions and trials of all Secondary schools was conducted through **e-mode last year**. Depending on the prevailing national posture, DSA-Sec schools may conduct **in-person selection for all DSA talent areas for 2022**.
- If required, video-conferencing will be carried out in Lianhua Primary School. A conducive environment with the necessary equipment will be prepared for students.
- More instructions on what is required will be provided by each Secondary school at a later date.

What are the possible DSA-Sec outcomes?

- **Confirmed Offer (CO)** → Your child has a place reserved in the school, as long as his/her PSLE results qualify him/her for a course the school offers (i.e. Express, Normal (Academic) or Normal (Technical)).
- **Wait List (WL)** → Your child will be given a place in the school if other students with Confirmed Offers do not take up those offers, and if his/her PSLE results qualify him/her for a course the school offers. Allocation will be based on students' rank on the school's Wait List.
- **Unsuccessful** → Your child has not been given a place in the school. If your child still wishes to enter the schools he/she applied for, he/she can apply through the S1 Posting process using his/her PSLE results.

If my child has a DSA-Sec Confirmed Offer, does it mean that his/ her PSLE results will not matter?

- Your child's PSLE results will still be **used to determine the secondary school course he/ she is eligible** for [i.e., Express, Normal (Academic), Normal (Technical)]
- Even if he/ she has a Confirmed Offer, he/she **must qualify for the course offered by the school** to be admitted to the DSA-Sec school.

Example: Leo has a Confirmed Offer from Courage Secondary, which offers the Express Course only. However, Leo's PSLE results qualify him for the Normal (Academic) course. Hence, Leo will not be able to go to Courage Secondary through DSA-Sec. If he is not allocated a place in another DSA-Sec school whose CO/ WL offer he had accepted at the School Preference stage, he will participate in the S1 Posting.

Honouring the DSA-Sec offer

- Students successfully allocated to their DSA-Sec schools will **NOT** be allowed to participate in the annual S1 Posting to opt for secondary schools, and are expected to honour the commitment to the allocated DSA-Sec school for the entire duration of the programme to develop their talents.

They will also **NOT** be allowed to transfer to another school after the release of the PSLE results.

2021 LHPS Direct School Admissions (DSA)

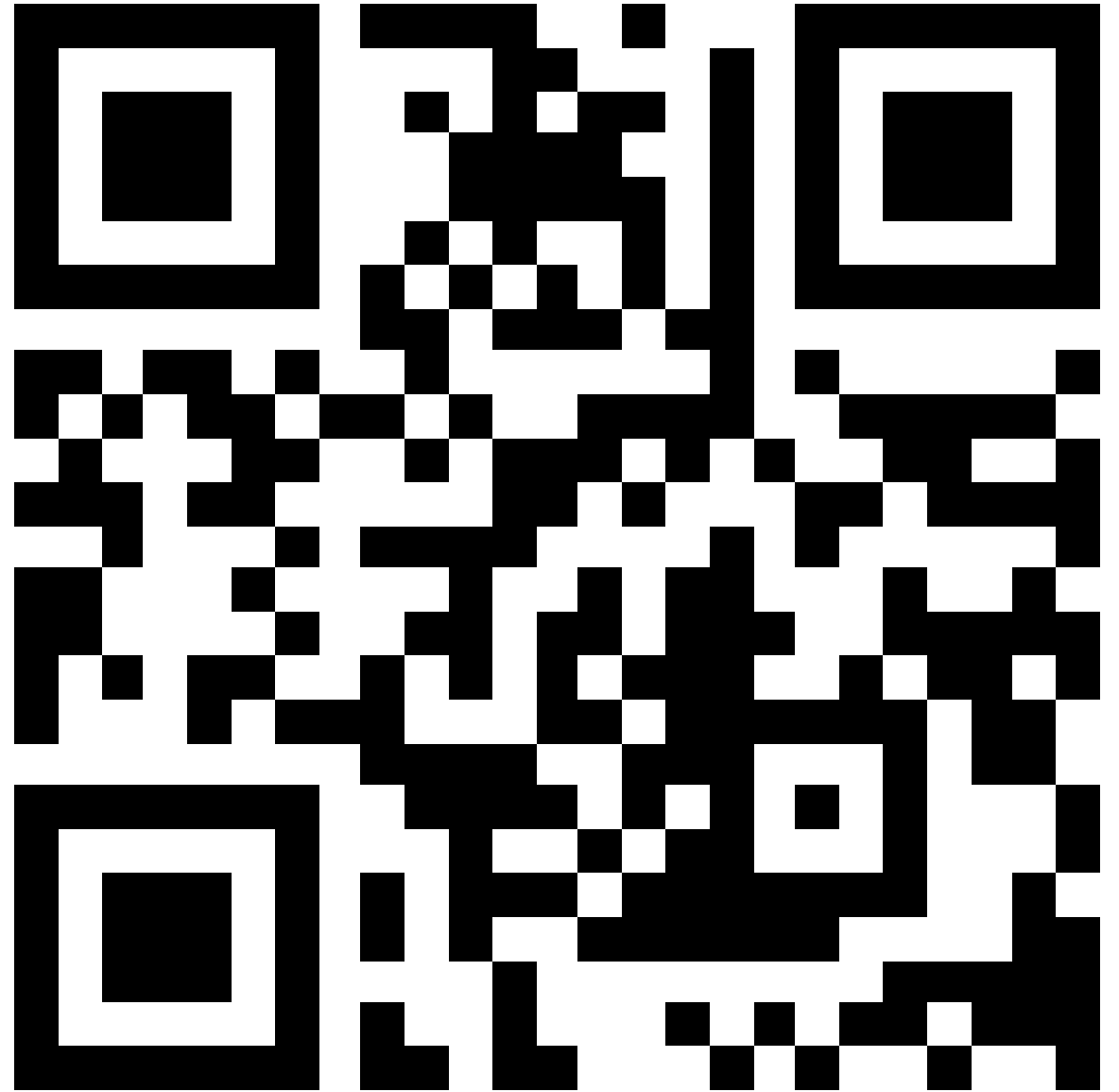
TALENTS	
Water Polo	STEM
Basketball	Robotics
Malay Dance	Malay Language
Volleyball	Mathematics

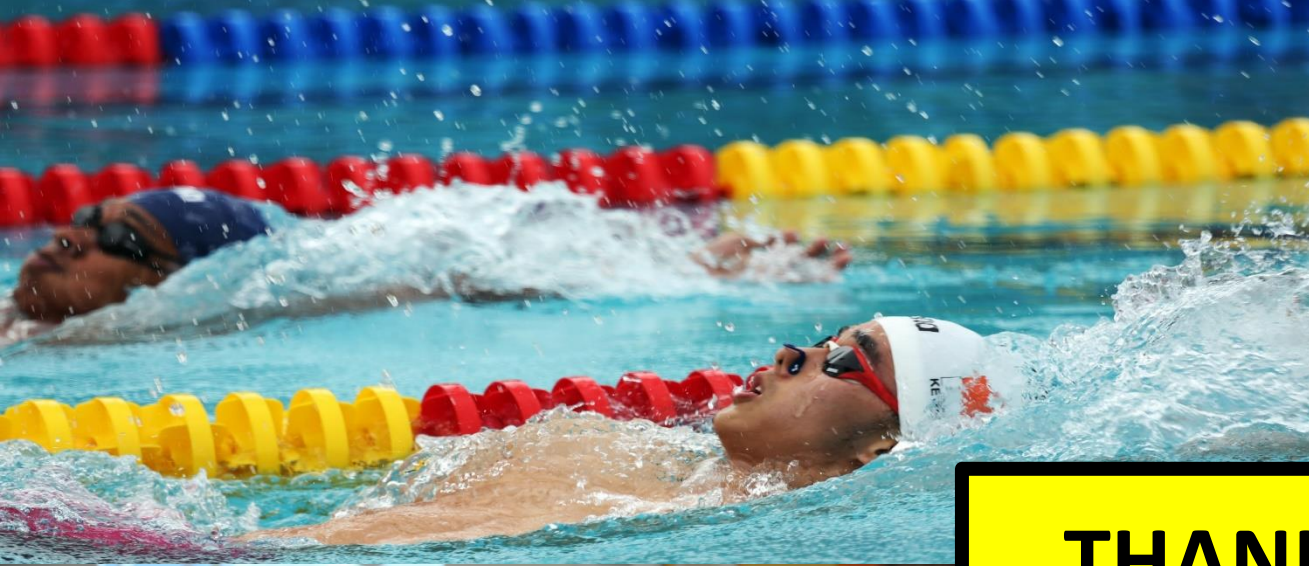


PSLE Scoring & Sec 1 Briefing 2022

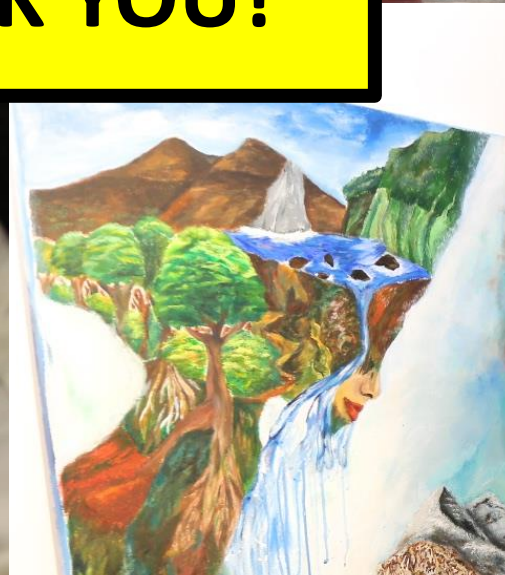


<https://tinyurl.com/psleLHPS>





THANK YOU!



联华小学

Direct School Admission for Secondary Schools (DSA-Sec)



Ministry of Education
SINGAPORE